



# LIFETIME EXPERIENCE CHERRY BLOSSOM 2026



Flights



Tour  
Manager



Sightseeing



Transfers



Hotel

7N/8D



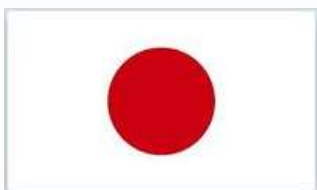


## High! Points by RP Tours!

- **Japan Airlines**
- **Comfortable 4-Star Stays with daily breakfast and Indian meals.**
- **Tokyo City Tour:** Visit iconic landmarks like Tokyo Sky Tree, Shibuya Crossing, Sensoji Temple, Meiji Shrine, Ueno Park, Shinjuku Gyoen & 3D Team Labs.
- **Cherry Blossom Experience at Chidorigafuchi Boat and Sumida River Cruise for panoramic Tokyo views.**
- **Mt. Fuji & Hakone Tour:** Visit the 5th Station of Mt. Fuji (weather permitting), enjoy the Hakone Ropeway, Owakudani Valley (Photo stop), and Lake Ashi Cruise.
- **Shinkansen Bullet Train Ride from Hakone to Hiroshima.**
- **Hiroshima Tour:** Explore Peace Memorial Park, the Atomic Bomb Dome, and Miyajima Island (including Itsukushima Shrine and Floating Torii Gate).
- **Osaka Highlights:** Photo stop at Osaka Castle and panoramic views from the Umeda Sky Tower.
- **Kyoto & Nara Tour:** Visit the Golden Pavilion (Kinkaku-ji), Arashiyama Bamboo Forest, Todaiji Temple, and the Nara Deer Park.
- **Shopping:** Free time for shopping in Akihabara, Shinsaibashi, and more.
- **Luxury Transfers in air-conditioned coaches with an experienced tour manager.**
- **Travel Insurance for your safety and peace of mind.**
- **Indian Lunches and Dinners throughout the trip.**



## Country Profile



# JAPAN



**Currency**  
yen (¥)



**Country Code**  
+81



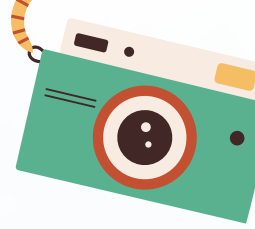
**Capital**  
Tokyo



**Time Difference**  
(GMT+9)

## TOUR OVERVIEW





# Accommodation



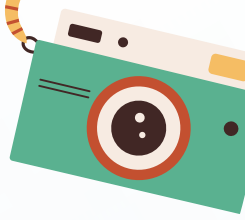
***3 nights in Tokyo***  
***DoubleTree by Hilton***  
***Tokyo Ariake or Similar***

***Standard Room***



***1 nights in Hakone***  
***Hyatt Regency Hakone***  
***Resort and Spa or Similar***

***Standard Room***



# Accommodation



***1 nights in Hiroshima***

***Grand Prince Hotel  
Hiroshima or Similar***

***Standard Room***



***2 nights in Osaka***

***DoubleTree by  
Hilton Osaka  
Castle or Similar***

***Standard Room***



## Day 1

## Welcome To Tokyo – The Land Of Rising Sun



- As you step off the plane and breathe in the energy of Tokyo, you'll immediately sense the perfect harmony between ancient traditions and futuristic wonders. At Narita Airport, you're welcomed with the kind of warmth that feels like family, marking the beginning of an unforgettable journey in the Land of the Rising Sun.
- A smooth transfer will take you straight to your hotel, ideally nestled in the bustling heart of the city. After checking in (check-in time 4:00 PM), unwind with the comfort of a rich, Indian buffet dinner, carefully curated for our enjoyment either at the hotel or a nearby Indian restaurant. Relish the familiar spices and flavors that bring a touch of home, while Tokyo's glowing skyline beckons you to explore the exciting fusion of cultures that await.
- With the city's vibrant lights shining through your window, you can unwind and soak in the anticipation of the unforgettable adventures to come.
- **(Dinner)**

## Day 2

## Full Day Tokyo Sightseeing – Imperial Palace, Asakusa, Sky Tree & Shibuya Crossing

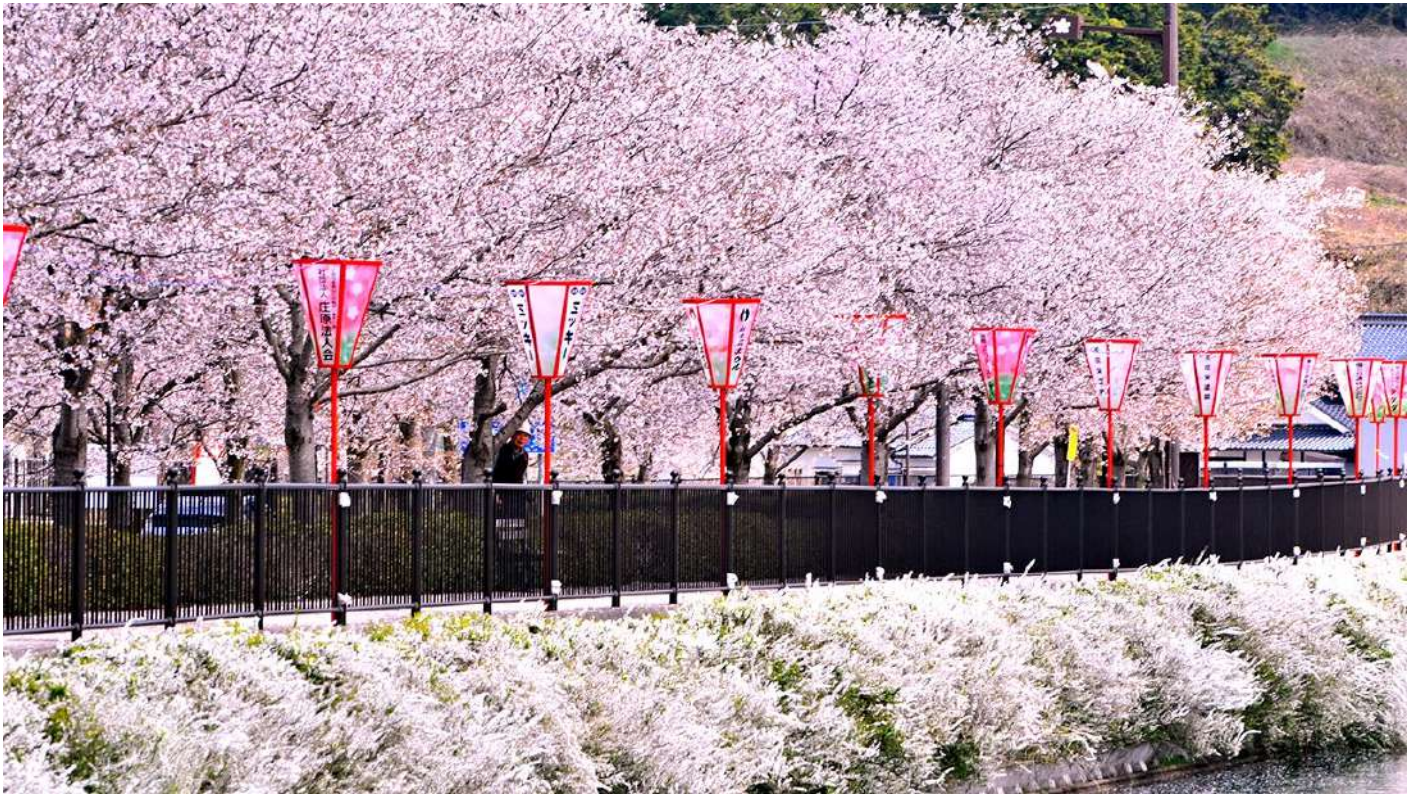


- Your first stop is the Imperial Palace, the residence of Japan's royal family. Its grand gates open to Japan's royal past, surrounded by tranquil gardens that whisper stories of the Emperor's reign.
- Next, you visit the Asakusa Temple, Tokyo's oldest temple and one of the most significant Buddhist structures in Japan. The air is filled with the soothing scent of incense, and the Nakamise Street market invites you to explore vibrant stalls—its lively hustle reminiscent of India's own bustling bazaars.
- A short ride takes you to the awe-inspiring Tokyo Sky Tree, standing tall at 350 meters as the tallest structure in Japan, offering panoramic views of this dynamic city, a symbol of Japan's engineering prowess.
- After a comforting Indian lunch, you head to Odaiba, home to the Statue of Liberty replica and the Rainbow Bridge, landmarks that are both a symbol of Tokyo's modernity and global connections.
- A peaceful Sumida River Cruise offers a serene view of the city, before reaching the iconic Shibuya Crossing, one of the busiest pedestrian crossings in the world, a testament to the pulse of Tokyo. Pause at the Hachiko Statue, a symbol of loyalty and love that resonates deeply, much like the values held dear in India.
- End your day with a delicious dinner at an Indian restaurant, savoring familiar flavors while reflecting on your day of discovery.
- **(Breakfast, Lunch, and Dinner)**



## Day 3

## Tokyo's Best – Experience Sakura At Ueno Park & Shinjuku Goyen – 3d Team Labs – Shopping At Akihabara



- Start your day by visiting the Meiji Shrine, dedicated to the deified spirits of Emperor Meiji and Empress Shoken. This sacred site offers a deep sense of peace and spirituality amid Tokyo's vibrant city life.
- Visit the Ueno Park, where cherry blossoms shower you with soft pink petals, creating a serene atmosphere reminiscent of peaceful temple gardens back home. This iconic park is one of the most famous in Japan.
- Next, wander through Shinjuku Gyoen National Garden, where over 400 cherry trees bloom, offering a tranquil escape that mirrors the calm of India's own natural beauty.
- Enjoy a comforting Indian meal for lunch, then head to Akihabara, the electronics and tech haven of Tokyo. From anime collectibles to the latest gadgets, Akihabara is a vibrant showcase of Japan's modern culture.
- End your day with 3D TeamLab Planets in Toyosu, a mesmerizing 3D digital art museum. Here, you don't just look at art – you become part of it. Walk barefoot through shallow pools of water that ripple with every step, wander through infinite digital landscapes that shift and glow around you, and marvel as light, sound, and motion transform the space into a living dream. Each installation invites exploration, reflection, and wonder, creating a sense of floating between reality and imagination.
- Conclude the day with a flavorful Indian dinner, savoring familiar tastes while reflecting on a Tokyo day that seamlessly blended nature, tradition, modernity, and futuristic artistry.
- **(Breakfast, Lunch, and Dinner)**



## **Day 4** *A Day Of Majestic Beauty – Mt. Fuji, Hakone, And Lake Ashi*



- Today, we journey to the iconic Mt. Fuji, Japan's highest and most sacred peak. Standing at 3,776 meters, Mt. Fuji is a UNESCO World Heritage Site and the symbol of Japan. As you ascend to the 5th station (weather permitting), the majesty of the mountain will take your breath away. The crisp mountain air and serene surroundings offer a moment of reflection.
- After a hearty Indian lunch, the adventure continues to Hakone, known for its hot springs and stunning vistas. Owakudani Valley offers volcanic views and the scent of sulfur, reminding you of the Earth's raw power.
- From there, soar above the valley on the Hakone Ropeway (Owakudani – Togendai), offering panoramic views of Mt. Fuji and the surrounding mountains, leaving you speechless with the beauty of the landscape.
- The day concludes with a tranquil Lake Ashi cruise (Togendai – Hakone Machi), where you'll be surrounded by serene waters and breathtaking scenery. This peaceful moment offers a chance to reflect on the day's beauty before heading to an Indian restaurant for a warm dinner.
- **(Breakfast, Lunch, and Dinner)**

## Day 5

### *Transfer From Hakone To Hiroshima By Bullet Train – Miyajima Island, Itsukushima Shrine & Floating Torii Gate*



- After breakfast, embark on an unforgettable journey to Hiroshima aboard one of Japan's fastest Shinkansen (bullet trains), enjoying the thrill of high-speed travel and scenic views along the way.
- Upon arrival in Hiroshima, enjoy a delicious lunch at a local Indian restaurant before proceeding to the pier for a ferry ride to Miyajima Island (entrance included). Explore the centuries-old Itsukushima Shrine, a UNESCO World Heritage Site, where traditional Japanese architecture meets the tranquility of the sea. Stand before the legendary Floating Torii Gate, seemingly suspended above the water, and take in the serene, almost mystical atmosphere – especially during high tide when the gate appears to float, offering a moment of reflection and wonder.
- After soaking in the serene beauty of the island, return to Hiroshima and enjoy dinner at a local Indian restaurant. Transfer to your hotel for an overnight stay in Hiroshima.
- **(Breakfast, Lunch, and Dinner)**



## Day 6

### Transfer From Hiroshima To Osaka – Hiroshima Sightseeing & Umeda Sky Tower



- After breakfast, check out of your hotel and begin exploring Hiroshima's most significant historical landmarks. Visit the Hiroshima Peace Memorial Park & Museum, a serene area dedicated to promoting peace and commemorating the victims of the atomic bomb. The Museum offers a deeply moving insight into the events of August 6, 1945, and the city's journey toward recovery.
- Witness the Atomic Bomb Dome, a UNESCO World Heritage Site and the first place in history to have experienced the devastation of the world's first nuclear bomb attack and one of the few structures that survived the atomic bomb attack. This powerful symbol serves as a reminder of the devastating consequences of war and Hiroshima's unwavering commitment to peace.
- Upon arrival in Osaka, enjoy a delicious lunch at a local Indian restaurant before heading out to explore one of the city's most striking landmarks – the Umeda Sky Tower (entrance included) and its Sky Garden Observatory (time permitting). This architectural marvel features two 40-story towers connected at their uppermost levels by bridges and an escalator that spans the central atrium-like space. From the observatory, take in panoramic views of Osaka, from the bustling streets and modern skyline to the distant mountains, offering a perfect perspective of the city's vibrant energy.
- End the day with a comforting Indian dinner at a local restaurant, followed by a transfer to your hotel for check-in and overnight stay.
- **(Breakfast, Lunch, and Dinner)**

## Day 7

## Kyoto & Nara Tour – Full Day Of Japan’s Heartfelt Tradition



- After breakfast, we set out to experience the heartfelt traditions of Japan, starting with Nara, a city where history and nature coexist in perfect harmony. Wander through Nara Deer Park, where gentle deer roam freely, revered as messengers of the gods. Here, you'll feel the peaceful connection between humans and nature, a unique aspect of Japan's cultural heritage.
- Next, visit Todaiji Temple, home to the awe-inspiring Daibutsu, the world's largest bronze Buddha statue, standing 15 meters tall and weighing over 500 tons. This UNESCO World Heritage Site radiates a sense of reverence and tranquility, offering a profound insight into Japan's spiritual legacy.
- From Nara, we journey to Kyoto, Japan's ancient capital, a city that embodies timeless beauty and tradition. Be mesmerized by the Golden Pavilion (Kinkaku-ji), gleaming like a jewel amidst tranquil ponds and lush gardens. Its serene surroundings invite quiet reflection, allowing you to connect deeply with Japan's cultural elegance.
- We conclude our day with a visit to Arashiyama Bamboo Forest, where the towering bamboo stalks create a magical, otherworldly atmosphere. Walking through this natural cathedral, you'll feel transported to a place where nature, spirituality, and tradition converge in perfect harmony.
- **(Breakfast, Lunch, and Dinner)**



## Day 8

## Departure From Osaka – The End Of A Journey, The Beginning Of Memories



- Today marks the end of your unforgettable journey through Japan, but the memories you've created will stay with you forever. After breakfast at your hotel, check out and prepare for your transfer to the airport for your flight home.
- If time permits, enjoy some free time for shopping at Shinsaibashi, Osaka's most famous shopping street.
- As you board your flight, take a moment to reflect on the experiences that have shaped your journey. May you carry with you the soul of Japan, a country where tradition, history, and modernity blend seamlessly.
- **(Breakfast)**

## DEPARTURE DATES

MAR  
2026

24

APR  
2026

07,10,24

MAY  
2026

01,04,06  
08

## Selling Price

**381,676 per person + GST + TCS**

## Contact us



**+91 8920128580**



**info@rptours.in**



**rptours.in**





## What to Expect

- **Transfers & Sightseeing:** All transfers and extensive sightseeing, including entrance fees as specified in the itinerary, will be conducted in air-conditioned coaches.
- **Room Occupancy:** The maximum room occupancy in Japan is 3 persons per room. For the 3rd person, most hotels will provide rollaway beds, and the room size may be similar to a double room.
- **4-star hotels:** Rooms generally range from 180 sq ft to 250 sq ft.
- **3-star hotels:** Rooms generally range from 120 sq ft to 180 sq ft.
- **Visa:** We guarantee visa appointments, but please note, we do not have control over whether the visa will be granted or not.
- **Cash is King:** While Japan is quite modern, cash is still widely preferred, especially in smaller towns or at local shops. It's advisable to carry enough Japanese Yen for such occasions.
- **Be On Time:** Japanese culture places high importance on punctuality. If you're traveling with a group, ensure you're at the meeting point at least 5 minutes early. Whether it's a bus tour, flight, or dinner, timeliness is highly valued.
- **Emergency Numbers:** In case of an emergency, dial 110 for police and 119 for fire or medical emergencies.
- **Electrical Outlets:** Japan uses Type A and Type B plugs, and the voltage is 100V. If you are traveling with multiple devices, it's a good idea to bring a universal adapter and a power strip.
- **Water:** Tap water is safe to drink in Japan, so feel free to refill your bottle during your trip.
- **Queueing:** Japan is known for its orderly queues everywhere, from trains to elevators. Always stand in line and respect others' space.
- **Vending Machines Everywhere:** Japan is famous for its vending machines that offer everything from drinks to snacks and even hot meals. Don't hesitate to try them, but be aware that some machines only accept coins.
- **Always Ask Before Photographing:** In certain temples, shrines, and museums, photography may be restricted. Always ask for permission before taking photos in places where it's not clear.

## Exclusions

- **Transfers & Sightseeing:** All transfers and extensive sightseeing, including entrance fees as specified in the itinerary, will be conducted in air-conditioned

Coaches.

- **Room Occupancy:** The maximum room occupancy in Japan is 3 persons per room. For the 3rd person, most hotels will provide rollaway beds, and the room size may be similar to a double room.
- **4-star hotels:** Rooms generally range from 180 sq ft to 250 sq ft.
- **3-star hotels:** Rooms generally range from 120 sq ft to 180 sq ft.
- **Visa:** We guarantee visa appointments, but please note, we do not have control over whether the visa will be granted or not.
- **Cash is King:** While Japan is quite modern, cash is still widely preferred, especially in smaller towns or at local shops. It's advisable to carry enough Japanese Yen for such occasions.
- **Be On Time:** Japanese culture places high

importance on punctuality. If you're traveling with a group, ensure you're at the meeting point at least 5 minutes early. Whether it's a bus tour, flight, or dinner, timeliness is highly valued.

- **Emergency Numbers:** In case of an emergency, dial 110 for police and 119 for fire or medical emergencies.
- **Electrical Outlets:** Japan uses Type A and Type B plugs, and the voltage is 100V. If you are traveling with multiple devices, it's a good idea to bring a universal adapter and a power strip.
- **Water:** Tap water is safe to drink in Japan, so feel free to refill your bottle during your trip.
- **Queueing:** Japan is known for its orderly queues everywhere, from trains to elevators. Always stand in line and respect others' space.
- **Vending Machines Everywhere:** Japan is

famous for its vending machines that offer everything from drinks to snacks and even hot meals. Don't hesitate to try them, but be aware that some machines only accept coins.

- **Always Ask Before Photographing:** In certain temples, shrines, and museums, photography may be restricted. Always ask for permission before taking photos in places where it's not clear.

## Terms & Condition

- **Tour Timing:** All tours must start at 10:30 AM and end by 08:30 PM.
- **Vehicle Usage:** The vehicle provided is for a maximum of 10 hours per day, not exceeding 11 hours.
- **Hotel Availability:** Hotels quoted are subject to availability. If unavailable, hotels of a similar grade will be booked.



# Lifetime Experience – Cherry Blossom 2026

- *Price Adjustments: Tour fares may change based on hotel availability, coach availability, and other factors.*
  - *Itinerary Changes: The itinerary may be altered due to unforeseen circumstances like bad weather or traffic conditions. No refunds will be provided in such cases.*
  - *Room/Bed Type: Double Bed is available on a request basis and is not guaranteed.*
  - *Bank Charges: Any bank charges are to be borne by the remitter.*
  - *Coach & Guide: Coach and guide services are available for 10 hours per day. Services conclude by 9:00 PM due to Japanese laws.*
  - *Driver Breaks: The driver is required to take a 30-minute break after every 5 hours of driving.*
  - *Driver Working Hours: The Driver's working*
- hours start 1 hour before the scheduled pick-up time and cannot exceed 12 hours.*
- *Minor Changes: Minor program changes may be necessary based on road or weather conditions.*
  - *Price Adjustments: Prices may be subject to change due to ROE (Rate of Exchange), VAT, or other tax increases.*
  - *Cancellation Policy: 45 days before travel: Tour can be cancelled with a 10% cancellation charge.*
  - *30-45 days before travel: Tour can be cancelled with a 50% cancellation charge.*
  - *Less than 30 days: Tour is non-refundable.*